







Product Catalogue

This Product Catalogue is provided to ensure easy and accurate identification of gear drives for ordering purposes.

To browse the catalogue you have two options:

1. Use the titled section links below to jump straight to the information you desire.
2. Use the page number sequence at the top and bottom of the page to browse the catalogue one page at a time.

Table of contents

Page	Summary	Table
Index 1	Product catalogue introduction & table of contents (You are here.)	Contents
2 3	Gear Drive Selection Minimum thrust requirements for standard bearing arrangement Horsepower and thrust bearing ratings	 1 & 2
5	Dimensions Combination drives (automatic / centrifugal / manual clutch)	 3
6-7	Ratio and input speed (RPM)	 4
8-11	Horsepower and thrust ratings (standard, extra heavy, opposed, solid shaft, combination)	 5 & 6
12-13	Propeller & vertical turbine pump drives (fan cooled)	
14-16	Dimensions & standard clutch dimensions (standard gear drives only)	 7
18	Dimensions & standard clutch dimensions	 8
22	How to order and Contact Us	

For any questions or enquiries please contact the factory via the [contact randolph](#) page.

GEAR DRIVE SELECTION

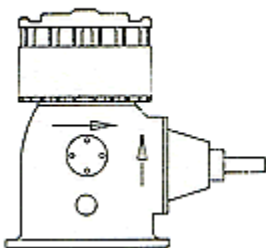
THE FOLLOWING INFORMATION SHOULD BE SUPPLIED WHEN ORDERING GEAR DRIVES:

Model Number and ratio (input to output speed), Thrust Requirements, Rotation, Horsepower Requirement, Pump Head, Shaft Size. We define the ratio as the ratio of horizontal input RPM to the vertical output RPM).

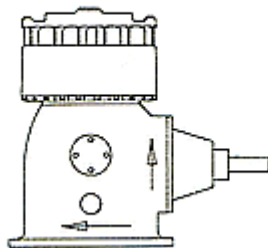
EXAMPLE: A 2:3 ratio gear drive operating at 1760 RPM output would have 1173 RPM input.

ROTATION: Shown *below* are four (4) possible rotations. Number one (1) is considered standard. Unless noted differently, the drive will be manufactured to this configuration. Numbers two (2), three (3) and four (4) are special rotations and are manufactured when specifically requested.

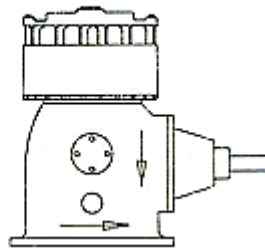
ROTATIONS



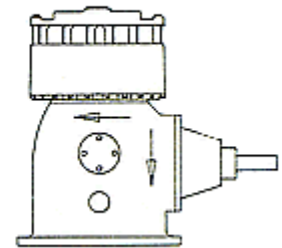
#01
HORIZONTAL - CW
VERTICAL - CCW



#02
HORIZONTAL - CW
VERTICAL - CW



#03
HORIZONTAL - CCW
VERTICAL - CCW



#04
HORIZONTAL - CCW
VERTICAL - CW

MODEL	MINIMUM THRUST REQUIREMENTS FOR STANDARD BEARING ARRANGEMENT															
	TABLE 1															
F30	NO MINIMUM DOWNTHRUST															
	For the following Gear Drive (No. 1 Rotation): Minimum Downthrust = $\frac{\text{Constant} \times \text{Horsepower}}{\text{Pump Speed}}$								Example: Model 80, 5:6 Ratio, 72 HP, 1800 Pump Speed $\frac{19,518 \times 72}{1800} = 781 \text{ Lbs Min.}$							
RATIO:	1:2	4:7	2:3	3:4	4:5	5:6	10:11	1:1	11:10	6:5	5:4	4:3	3:2	7:4	2:1	
G, M, 40 (R)	25,643	23,390	20,486	20,434	20,381	19,518	19,589	18,462	1,000	17,565	17,442	17,428	15,330	13,605	13,253	
G,M, 60 (R)																
G,M, 80																

(R)																	
G, M, 100 (R)																	
G125 (R)																	
M150 (R)																	
G150	18,638	16,386	17,424	15,558	14,502	15,224	14,907	13,130	1,000	1,000	1,000	1,000	1,000	528	1,074		
M200 (R)																	
G200A																	
G250																	
G300																	
G350																	
G400																	
G450																	
F, M500	NO MINIMUM DOWNTHRUST																
F590																	
F750																	
F1000																	
F1200																	
F1500																	
P200																	
	2:1	5:2	3:1														
	1,074	2,059	3,080														
P16AH	NO MINIMUM DOWNTHRUST																
P20A																	
P22																	
P24B																	
P30B																	

Note: For rotation No's. 2,3, & 4 contact factory, check TABLE 5 for downthrust on all combination, solid shaft, opposed bearings, and some extra heavy thrust bearings.

HORSEPOWER AND THRUST BEARING RATINGS

TABLE 2

VERTICAL RPM	340	430	580	690	720	870	960	1,160	1,460	1,760	2,000	2,200	2,400	2,600	2,800	3,000	3,460	3,600
PERCENT OF HP AT 1,760 RPM	33	38	46	53	54	61	65	74	89	100	105	111	116	122	*128	*133	*146	*150
PERCENT OF THRUST	170	160	145	137	135	126	122	115	106	100	96	93	90	88	86	84	82	80

Note: To obtain horsepower and thrust bearing ratings for the speeds listed, multiply the horsepower and thrust bearing rating at 1,760 RPM by the percentage in TABLE 2.

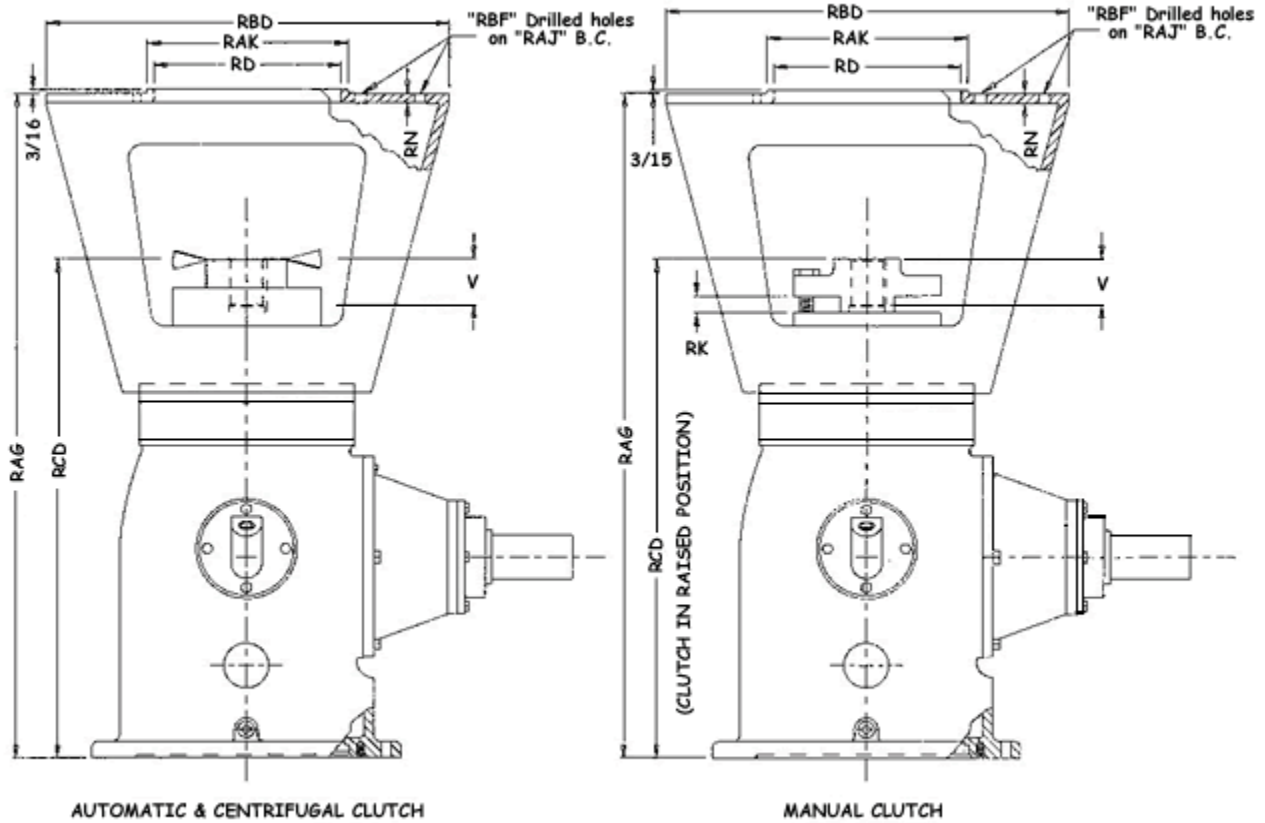
* Contact factory.



Models designated with "M" are reduced in size
All models with *NO fan* cooling are designated by a suffix
"R" on the model number
AGMA Service Factor of 1.5 on all models
FM on most models



ON MOST MODELS



DIMENSIONS COMBINATION DRIVES

TABLE 3

All combination drives have water cooling coils where required.
All model numbers have a suffix "MS" & "TYPE" - Example: F30 MS AUTO

MODEL:	F30	M40 / 60 / 80 / 100	G40 / 60 / 80	G100 / 125	M150	M200	G150 / 200A	G250	G300	G350 / 400	F500 / 590 / 750	P200	P20A
V	1 1/8	2	2	2	2	2 1/2	2 1/2	2 1/2	2 1/2	2 1/2	3	2 1/2	3
RCD CENTRIFUGAL	N/A	25 1/16	29 1/2	29 1/2	29 1/2	N/A	38	38	N/A	N/A	N/A	N/A	N/A
RCD AUTOMATIC	15 1/4	N/A	N/A	N/A	N/A	N/A	N/A	N/A	N/A	N/A	N/A	N/A	N/A
RCD MANUAL	N/A	23	27 1/2	27 1/2	27 1/2	31 1/8	33 9/16	33 9/16	33 9/16	35 1/4	45 3/8	33 9/16	31 1/2
RAG	22 3/8	33 1/2	38	38	38	38 9/16	45 9/16	45 9/16	45 9/16	45 3/8	59 3/4	45 9/16	43 5/8
RK MANUAL	N/A	7/8	7/8	7/8	7/8	1 1/16	1 1/16	1 1/16	1 1/16	1 1/16	1	1 1/16	1
RBD	10 1/4	16 1/2	20	20	20	20	24 7/16	24 7/16	24 7/16	24 7/16	24 1/2	24 7/16	24 1/2
RAJ	9 1/8	14 3/4	14 3/4	14 3/4	14 3/4	14 3/4	14 3/4	14 3/4	14 3/4	14 3/4	14 3/4 & 23	14 3/4	14 3/4 & 23
RBF	4- 13/32	4-11/16	8-11/16	8-11/16	8-11/16	8-11/16	8-11/16	8-11/16	8-11/16	8-11/16	8-13/16	8-11/16	8-13/16
RAK	8.249	13.499	13.499	13.499	13.499	13.499	13.499	13.499	13.499	13.499	13.498	13.499	13.498
RO	7 3/4	12 3/4	12 3/4	12 3/4	12 3/4	12 3/4	12 13/16	12 13/16	12 13/16	12 13/16	12 1/4	12 13/16	12 1/4
RN	3/8	5/8	3/4	3/4	3/4	3/4	7/16	7/16	7/16	7/16	5/8	7/16	5/8
APPROX. NET WT. LBS	135	430	575	590	590	750	1010	1010	1010	1090	1600	865	1050
DOMESTIC WT. LBS.	150	460	605	620	620	780	1045	1045	1045	1125	1675	900	1090
EXPORT WT. LBS.	175	545	712	727	727	900	1230	1230	1230	1310	1865	1085	1195
EXPORT CUBE FT.	3.5	10.7	13.0	13.0	13.0	13.2	34.0	34.0	34.0	34.0	57.0	34.0	19.0

All other dimensions and oil capacity are the same as standard gear drive. All models are standard sprag type non-reverse except centrifugal which has no non-reverse protection.

IRRIGATION AND INDUSTRIAL PUMP DRIVES



Models designated with "M" are reduced in size
 All models with *NO fan* cooling are designated by a suffix "R"
 on the model number
AGMA Service Factor of 1.5 on all models
FM on most models



ON MOST MODELS

RATIO AND SPEED

TABLE 4

MODEL	OUTPUT SPEED (RPM)	RATIO AND INPUT SPEED (RPM)														
		SPEED INCREASER							SPEED DECREASER							
		1:2	4:7	2:3	3:4	4:5	5:6	10:11	1:1	11:10	6:5	5:4	4:3	3:2	7:4	2:1
F30	340	-		-	-		-		340		405		453	510		680
	1,460	730		973	1,095		1,226		1,460		1,738		1,947	2,190		2,920
	1,760	880	N/A	1,173	1,320	N/A	1,478	N/A	1,760	N/A	2,095	N/A	2,347	2,640	N/A	3,520
	2,200	1,100		1,467	1,650		1,848		2,200		2,619		2,933	3,300		
	2,800	1,400		1,876	2,100		2,352		2,800		3,333		-	-		
	3,600	1,800		2,400	2,700		3,024		3,600		-		-	-		
M40 / M40R M60 / M60R M80 / M80R M100 / M100R	430			287	323	344	358	386	430	480	516	538	573	645		
	1,160			773	870	928	967	1,040	1,160	1,294	1,392	1,450	1,547	1,740		
	1,460	N/A	N/A	973	1,095	1,168	1,217	1,309	1,460	1,628	1,752	1,825	1,947	2,190	N/A	N/A
	1,760			1,173	1,320	1,408	1,467	1,578	1,760	1,963	2,112	2,200	2,347	2,640		
	2,200			1,467	1,650	1,760	1,833	1,972	2,200	2,454	2,640	2,750	2,933	*3,300		
	2,600			1,733	1,950	2,080	2,167	2,331	2,600	2,900	3,120	*3,250	*3,467	-		
G40 / G40R G60 / G60R G80 / G80R G100 / G100R G125 / G125R M150 / M150R	430	220	244	287	323	344	358	386	430	480	516	538	573	645	748	860
	1,160	593	659	773	870	928	967	1,040	1,160	1,294	1,392	1,450	1,547	1,740	2,017	2,320
	1,460	746	830	973	1,095	1,168	1,217	1,309	1,460	1,628	1,752	1,825	1,947	2,190	2,539	2,920
	1,760	900	1,000	1,173	1,320	1,408	1,467	1,578	1,760	1,963	2,112	2,200	2,347	2,640	3,061	*3,520
	2,200	1,124	1,250	1,467	1,650	1,760	1,833	1,972	2,200	2,454	2,640	2,750	2,933	*3,300	-	-
	2,600	1,329	1,477	1,733	1,950	2,080	2,167	2,331	2,600	2,900	3,120	*3,250	*3,467	-	-	-
M200 / M200R	430				323	344	358	387	430	478	512	538	573			
	1,160				870	928	967	1,044	1,160	1,289	1,392	1,450	1,547			
	1,460	N/A	N/A	N/A	1,095	1,168	1,217	1,314	1,460	1,622	1,752	1,825	1,945	N/A	N/A	N/A
	1,760				1,320	1,408	1,467	1,584	1,760	1,956	2,112	2,200	2,347			
	2,200				1,650	1,760	1,833	1,980	2,200	2,444	2,640	2,750	*2,933			
	2,600				1,950	2,080	2,167	2,340	2,600	*2,889	*3,120	*3,250	*3,467			
G150	430	215	246	287	319	341	365	386	430	479	507	541	579	645	753	843
	1,160	580	663	773	862	921	984	1,041	1,160	1,293	1,367	1,461	1,562	1,740	2,030	2,275
	1,460	730	834	973	1,085	1,159	1,239	1,310	1,460	1,627	1,721	1,839	1,965	2,190	2,555	*2,864

	1,760	880	1,006	1,173	1,307	1,398	1,493	1,579	1,760	1,961	2,074	2,216	2,369	*2,640	*3,080	*3,452
	2,200	1,100	1,257	1,467	1,634	1,747	1,867	1,974	2,200	2,451	2,593	-	-	-	-	-
	2,600	1,300	1,486	1,733	1,931	2,065	2,206	2,333	-	-	-	-	-	-	-	-
G200A / G250 / G300	430	215	246	287	319	341	365	386	430	479	507	541	579	645	753	
	1,160	580	663	773	862	921	984	1,041	1,160	1,293	1,367	1,461	1,562	1,740	2,030	
	1,460	730	434	973	1,085	1,159	1,239	1,310	1,460	1,627	1,721	1,839	1,965	2,190	2,555	
	1,760	880	1,006	1,173	1,307	1,398	1,493	1,579	1,760	1,961	2,074	2,216	2,369	*2,640	*3,080	
	2,200	1,100	1,257	1,467	1,634	1,747	1,867	1,974	2,200	2,451	2,593	-	-	-	-	
	2,600	1,300	1,486	1,733	1,931	2,065	2,206	2,333	-	-	-	-	-	-	-	-
G350 / G400	430	N/A	N/A	287	323	344	358	392	430	472	516	541	579	645	N/A	N/A
	1,160			773	870	928	967	1,058	1,160	1,272	1,392	1,461	1,562	1,740		
	1,460			973	1,095	1,168	1,217	1,331	1,460	1,601	1,752	1,839	1,965	2,190		
	1,760			1,173	1,320	1,408	1,467	1,605	1,760	1,930	2,112	2,216	2,369	*2,640		
	2,150			1,433	1,613	1,720	1,792	1,960	2,150	2,358	2,580	*2,707	*2,894	*3,225		
	2,500			1,667	1,875	-	2,083	-	-	-	-	-	-	-		
G450 / M500	430	N/A	N/A	N/A	N/A	344	358	392	430	472	516	N/A	N/A	N/A	N/A	N/A
	1,160					928	967	1,058	1,160	1,272	1,392					
	1,460					1,168	1,217	1,331	1,460	1,601	1,752					
	1,760					1,408	1,467	1,605	1,760	1,930	2,112					
	2,150					1,720	1,792	1,960	2,150	2,358	2,580					
	2,350					-	1,958	2,143	-	-	-					
F500 / F590 F750	430	219	249	287	323	344	358	387	430	478	516	538	573	645	N/A	N/A
	1,160	591	672	773	870	928	967	1,044	1,160	1,289	1,392	1,450	1,547	1,740		
	1,460	744	845	973	1,095	1,168	1,217	1,314	1,460	1,622	1,752	1,825	1,947	2,190		
	1,760	897	1,019	1,173	1,320	1,408	1,467	1,584	1,760	1,956	2,112	2,200	2,347	2,640		
	1,900	968	1,100	1,267	1,425	1,520	1,583	1,710	-	-	-	-	-	-		
	2,000	1,019	1,158	-	1,500	1,600	1,667	-	-	-	-	-	-	-		
F1000	430	N/A	N/A	N/A	N/A	358	N/A	430	N/A	516	538	573	645	N/A	N/A	
	720					600		720		864	900	960	1,080			
	870					725		870		1,044	1,088	1,160	1,305			
	1,160					967		1,160		1,392	1,450	1,547	1,740			
	1,460					1,217		1,460		1,752	1,825	1,947	2,190			
	1,760					1,467		1,760		2,112	2,200	2,347	2,640			
F1200 / F1500	430	N/A	N/A	N/A	N/A	358	N/A	430	N/A	516	538	573	652	N/A	N/A	
	720					600		720		864	900	960	1,091			
	870					725		870		1,044	1,088	1,160	1,318			
	1,160					967		1,160		1,392	1,450	1,547	1,758			
	1,460					1,217		1,460		1,752	1,825	1,973	2,212			
	1,760					1,467		1,760		2,112	2,200	-	-			

* Ping type non-reverse is standard on models M40 through M500.

SPRAG type is available at extra cost.

SPRAG type non-reverse is standard on F30 and F500 through F1500 models.

Water-cooling coils are standard on M100, M150, M200, and G250 through F1500.

Water-cooling coils are installed in all models with suffix "R". 80HP and larger.

* Contact factory when operating at this speed.

IRRIGATION AND INDUSTRIAL PUMP DRIVES



Models designated with "M" are reduced in size
 All models with *NO fan* cooling are designated by a suffix
 "R" on the model number
AGMA Service Factor of 1.5 on all models
FM on most models



ON MOST MODELS

HORSEPOWER AND THRUST RATINGS

TABLE 5

MODEL	OUTPUT SPEED (RPM)	HP	THRUST CAPACITY					
			STANDARD		EXTRA HEAVY E.H.T.		OPPOSED, SOLID SHAFT & COMBINATION	
			MIN	MAX	MIN	MAX	MIN	MAX
F30	340	10	0	5,100	N/A	N/A	0	5,100
	1,460	27	0	3,180			0	3,180
	1,760	30	0	3,000			0	3,000
	2,200	33	0	2,790			0	2,790
	2,800	38	0	2,580			0	2,580
	3,600	45	0	2,400			0	2,400
G/M40 G/M40R	430	15	SEE TABLE 1	6,400	SEE TABLE 1	9,600	0	6,400
	1,160	30		4,600		6,900	0	4,600
	1,460	36		4,240		6,360	0	4,240
	1,760	40		4,000		6,000	0	4,000
	2,200	44		3,720		5,580	0	3,720
	2,600	49		3,520		5,280	0	3,520
G/M60 G/M60R	430	23	SEE TABLE 1	7,200	SEE TABLE 1	9,600	0	6,400
	1,160	44		5,175		6,900	0	4,600
	1,460	53		4,770		6,360	0	4,240
	1,760	60		4,500		6,000	0	4,000
	2,200	67		4,185		5,580	0	3,720
	2,600	73		3,960		5,280	0	3,520
G/M80 G/M80R	430	30	SEE TABLE 1	8,800	SEE TABLE 1	11,200	0	6,400
	1,160	59		6,325		8,050	0	4,600
	1,460	71		5,830		7,420	0	4,240

	1,760	80		5,500		7,000	0	4,000
	2,200	89		5,115		6,510	0	3,720
	2,600	98		4,840		6,160	0	3,520
G/M100 G/M100R	430	38	SEE TABLE 1	9,920	SEE TABLE 1	13,600	0	6,400
	1,160	74		7,130		9,775	0	4,600
	1,460	89		6,572		9,010	0	4,240
	1,760	100		6,200		8,500	0	4,000
	2,200	111		5,766		7,905	0	3,720
	2,600	122		5,456		7,480	0	3,520
G125 G125R	430	48	SEE TABLE 1	10,720	SEE TABLE 1	13,600	0	6,400
	1,160	93		7,705		9,775	0	4,600
	1,460	111		7,102		9,010	0	4,240
	1,760	125		6,700		8,500	0	4,000
	2,200	139		6,231		7,905	0	3,720
	2,600	153		5,896		7,480	0	3,520
M150 M150R	430	57	SEE TABLE 1	11,520	SEE TABLE 1	14,400	0	6,400
	1,160	111		8,280		10,350	0	4,600
	1,460	134		7,632		9,540	0	4,240
	1,760	150		7,200		9,000	0	4,000
	2,200	167		6,696		8,370	0	3,720
	2,600	183		6,336		7,920	0	3,520
G150	430	57	SEE TABLE 1	12,160	SEE TABLE 1	16,000	0	8,000
	1,160	111		8,740		11,500	0	5,750
	1,460	134		8,056		10,600	0	5,300
	1,760	150		7,600		10,000	0	5,000
	2,200	167		7,068		9,300	0	4,650
	2,600	183		6,688		8,800	0	4,400
M200 M200R	430	76	SEE TABLE 1	14,400	N/A	N/A	0	8,000
	1,160	148		10,350			0	5,750
	1,460	178		9,540			0	5,300
	1,760	200		9,000			0	5,000
	2,200	222		8,370			0	4,650
	2,600	244		7,920			0	4,400
G200A	430	76	SEE TABLE 1	14,400	SEE TABLE 1	20,800	0	8,000
	1,160	148		10,350		14,950	0	5,750
	1,460	178		9,540		13,780	0	5,300
	1,760	200		9,000		13,000	0	5,000
	2,200	222		8,370		12,090	0	4,650
	2,600	244		7,920		11,440	0	4,400
G250	430	95	SEE TABLE 1	17,600	SEE TABLE 1	20,800	0	8,000
	1,160	185		12,650		14,950	0	5,750
	1,460	223		11,660		13,780	0	5,300
	1,760	250		11,000		13,000	0	5,000
	2,200	278		10,230		12,090	0	4,650
	2,600	305		9,680		11,440	0	4,400
G300	430	114	SEE TABLE 1	17,600	0	26,400	0	8,000

	1,160	222		12,650	0	18,975	0	5,750
	1,460	267		11,660	0	17,490	0	5,300
	1,760	300		11,000	0	16,500	0	5,000
	2,200	333		10,230	0	15,345	0	4,650
	2,600	366		9,680	0	14,520	0	4,400
G350	430	133	SEE TABLE 1	25,600	0	32,000	0	11,200
	1,160	259		18,400	0	23,100	0	8,050
	1,460	312		16,960	0	21,200	0	7,420
	1,760	350		16,000	0	20,000	0	7,000
	2,150	383		15,000	0	18,750	0	6,563
	2,500	417		14,240	0	17,800	0	6,230
G400	430	152	SEE TABLE 1	25,600	0	32,000	0	11,200
	1,160	296		18,400	0	23,000	0	8,050
	1,460	356		16,960	0	21,200	0	7,420
	1,760	400		16,000	0	20,000	0	7,000
	2,150	438		15,000	0	18,750	0	6,563
	2,500	476		14,240	0	17,800	0	6,230
G450	430	171	0	25,600	0	32,000	0	25,600
	1,160	333	0	18,400	0	23,000	0	18,400
	1,460	401	0	16,960	0	21,200	0	16,960
	1,760	450	0	16,000	0	20,000	0	16,000
	2,150	493	0	15,000	0	18,750	0	15,000
	2,500	536	0	14,240	0	17,800	0	14,200
M500	430	190	0	25,600	0	32,000	0	25,600
	1,160	370	0	18,400	0	23,000	0	18,400
	1,460	445	0	16,960	0	21,200	0	16,960
	1,760	500	0	16,000	0	20,000	0	16,000
	2,150	548	0	15,000	0	18,750	0	15,000
	2,500	595	0	14,240	0	17,800	0	14,240
F500	430	190	0	32,000	0	48,000	0	32,000
	1,160	370	0	23,000	0	34,500	0	23,000
	1,460	445	0	21,200	0	31,800	0	21,200
	1,760	500	0	20,000	0	30,000	0	20,000
	1,900	513	0	19,600	0	29,400	0	19,600
	2,000	525	0	18,600	0	28,800	0	18,600
F590	430	228	0	32,000	0	48,000	0	32,000
	1,160	444	0	23,000	0	34,500	0	23,000
	1,460	534	0	21,200	0	31,800	0	21,200
	1,760	600	0	20,000	0	30,000	0	20,000
	1,900	615	0	19,600	0	29,400	0	19,600
	2000	630	0	18,600	0	28,800	0	18,600
F750	430	285	0	32,000	0	48,000	0	32,000
	1,160	555	0	23,000	0	34,500	0	23,000
	1,460	668	0	21,200	0	31,800	0	21,200
	1,760	750	0	20,000	0	30,000	0	20,000
	1,900	769	0	19,600	0	29,400	0	19,600

	2000	788	0	18,600	0	28,800	0	18,600
F1000	430	380	0	32,000	0	48,000	0	32,000
	720	540	0	27,000	0	40,500	0	27,000
	870	610	0	25,200	0	37,800	0	25,200
	1,160	740	0	23,000	0	34,500	0	23,000
	1,460	890	0	21,200	0	31,800	0	21,200
	1,760	1,000	0	20,000	0	30,000	0	20,000
F1200	430	456	0	40,000	0	64,000	0	40,000
	720	648	0	33,750	0	54,000	0	33,750
	870	732	0	31,500	0	50,400	0	31,500
	1,160	888	0	28,750	0	46,000	0	28,750
	1,460	1,068	0	26,500	0	42,400	0	26,500
	1,760	1,200	0	25,000	0	40,000	0	25,000
F1500	430	570	0	40,000	0	64,000	0	40,000
	720	810	0	33,750	0	54,000	0	33,750
	870	915	0	31,500	0	50,400	0	31,500
	1,160	1,110	0	28,750	0	46,000	0	28,750
	1,460	1,335	0	26,500	0	42,400	0	26,500
	1,760	1,500	0	25,000	0	40,000	0	25,000

PROPELLER AND VERTICAL TURBINE PUMP DRIVES

TABLE 6

All models are speed deceser fan cooled only.

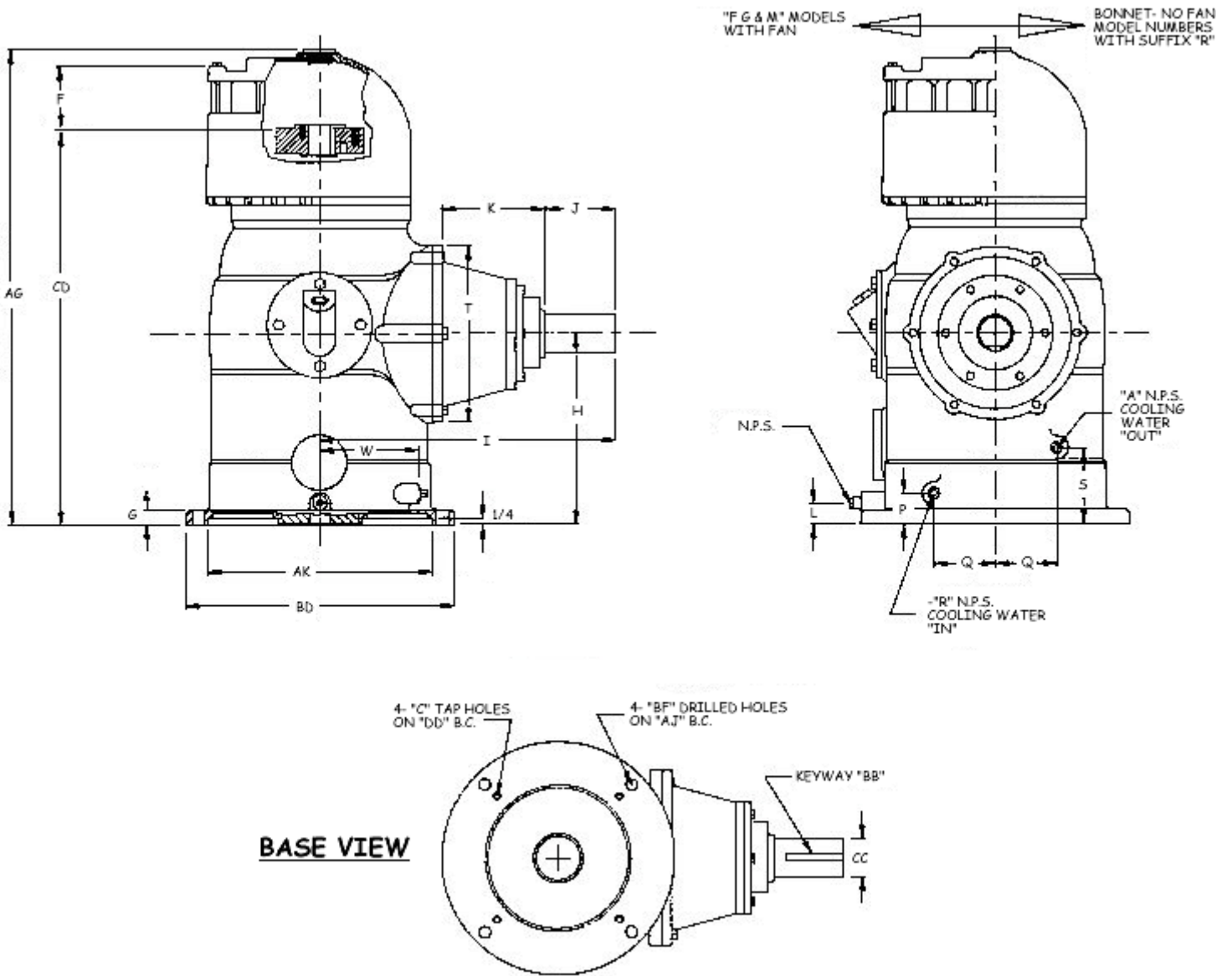
MODEL	PUMP RPM	THRUST CAPACITY	HORSEPOWER & ENGINE SPEED																	
			2:1		5:2		3:1		7:2		4:1		9:2		5:1		11:2		6:1	
			HP	RPM	HP	RPM	HP	RPM	HP	RPM	HP	RPM	HP	RPM	HP	RPM	HP	RPM	HP	RPM
P200	580	8,600	90	1,138	90	1,421	75	1,740												
	720	8,000	110	1,412	110	1,764	90	2,160												
	870	7,500	125	1,707	125	2,132	110	2,610												
	960	7,300	135	1,883	135	2,352	120	2,880												
P16AH	340	10,000	100	680	100	858	100	1,020	100	1,190	80	1,360	75	1,530	70	1,700				
	430	9,600	115	860	115	1,085	115	1,290	115	1,505	90	1,720	85	1,935	80	2,150				
	500	8,700	125	1,000	125	1,262	125	1,500	125	1,750	100	2,000	95	2,250	85	2,500				
	580	8,600	140	1,160	140	1,464	140	1,740	140	2,030	110	2,320	105	2,610						
	720	8,000	165	1,440	165	1,817	165	2,160	165	2,520										
	870	7,500	185	1,740	185	2,196	185	2,610												
	960	7,300	200	1,920	200	2,423														
P20A	340	10,500	180	694	180	850	170	1,041	170	1,190	170	1,360	165	1,530	135	1,700	130	1,836	130	2,012
	430	10,000	200	878	200	1,075	200	1,317	200	1,505	200	1,720	205	1,935	170	2,150	165	2,322	165	2,544
	500	9,500	230	1,021	230	1,250	230	1,531	230	1,750	230	2,000	230	2,250	195	2,500	185	2,700	185	3,000
	580	9,000	250	1,185	250	1,450	250	1,776	250	2,030	250	2,320	250	2,610						
	720	8,500	300	1,470	300	1,800	300	2,205	300	2,520										
	870	8,000	330	1,776	330	2,175														
	960	7,500	360	1,960	360	2,400														
P22	340	27,000	265	668	260	836	255	1,020	250	1,190	250	1,360	240	1,530	210	1,700	200	1,870		
	430	24,000	330	845	320	1,057	315	1,290	310	1,505	310	1,720	300	1,935	260	2,150	260	2,365		
	500	22,500	375	983	365	1,229	360	1,500	355	1,750	355	2,000	340	2,250	300	2,500				
	580	22,000	430	1,140	420	1,426	415	1,740	410	2,030	410	2,320								
	720	20,000	520	1,415	510	1,770	505	2,160		2,520										
	870	19,000	620	1,710	600	2,139														
P24B	250	30,000	290	491	290	615	260	750	250	875	220	1,000	220	1,125	220	1,250	180	1,375		
	340	27,000	395	668	395	836	345	1,020	330	1,190	290	1,360	290	1,530	290	1,700	240	1,870		
	430	24,000	500	845	500	1,057	425	1,290	410	1,505	360	1,720	360	1,935	360	2,150	300	2,365		
	500	22,500	580	983	580	1,229	490	1,500	450	1,750	410	2,000	400	2,250	400	2,500				
	580	22,000	650	1,140	650	1,426	560	1,740	505	2,030	470	2,320								
	720	20,000	765	1,415	765	1,770	675	2,160	595	2,520										
	870	19,000	900	1,710	900	2,139														

P30B	250	35,000					390	750	375	875	365	1,000	350	1,125			300	1,375		
	340	33,000					515	1,020	500	1,190	485	1,360	475	1,530			425	1,870		
	430	31,000					635	1,290	615	1,505	600	1,720	600	1,935			560	2,365		
	500	29,000					725	1,500	705	1,750	686	2,000	686	2,250						
	580	28,000					830	1,740	805	2,030	780	2,320								
	720	26,000					1,005	2,160	975	2,520										

* Contact factory for availability of ratios not listed.

* Cooling coils are not required on above models.

Table 07a | Table 07b



DIMENSIONS

TABLE 7a

Contact factory for certified print when tolerances are required.

F, G, or M, designates "with fan cooling" - Model No. with suffix "R" has NO fan: Example - M200R

MODEL	F30	M40 / 60 / 80 / 100	G40 / 60 / 80	G100 / 125 M150	M200	G150 / 200A	G250 / 300	G350 / 400	G450 M500	F500 / 590 / 750	F1000	F1200 / 1500
AG (FAN)	14 3/8	22 1/4	26 11/16	26 11/16	29 15/16	34	34	36	37	45 7/16	45 7/16	46 1/8
AG (BONNET)	-	22 1/8	26 7/16	26 7/16	29 7/16	-	-	-	-	-	-	-
AJ	9 1/8	14 3/4	14 3/4	14 3/4	14 3/4	18 1/4	18 1/4	18 1/4	18 1/4	23	23	28 3/4

AK	8.252	13.501	13.501	13.501	13.501	13.501	13.501	13.501	13.501	13.501	13.501	22.005
BB	5/16 x 5/32	3/8 x 3/16	3/8 x 3/16	5/8 x 5/16	5/8 x 5/16	5/8 x 5/16	3/4 x 3/8	3/4 x 3/8	3/4 x 3/8	7/8 x 7/16	7/8 x 7/16	7/8 x 7/16
BD	10	16 1/2	16 1/2	16 1/2	16 1/2	20	20	20	20	24 1/2	24 1/2	30 1/2
BF	13/32	11/16	11/16	11/16	11/16	11/16	11/16	11/16	11/16	13/16	13/16	13/16
BXmax.	1	1 1/2	1 1/2	1 1/2	1 15/16	1 15/16	1 15/16	2 3/16	2 3/16	2-15/16	2-15/16	4 1/4
BXmin.	3/4	3/4	3/4	3/4	1 3/16	1 3/16	1 3/16	1 1/2	1 1/2	1 11/16	1 11/16	2 15/16
Ctap	-	-	-	-	-	5/8-11	5/8-11	5/8-11	5/8-11	5/8-11	5/8-11	3/4-10
CC	1.249	1.874	1.874	2.249	2.437	2.437	2.937	2.937	2.937	3.749	3.749	3.749
CD	11 3/4	17 5/8	22 9/16	22 5/8	24 7/8	29 3/16	29 3/16	31 9/16	32 3/4	40 13/16	40 13/16	37 3/4
DD	-	-	-	-	-	14 3/4	14 3/4	14 3/4	14 3/4	14 3/4	14 3/4	26
F (FAN)	2 5/8	3 15/16	3 1/2	3 1/2	4 1/2	4 1/8	4 1/16	3 3/8	3 3/8	3 7/8	3 7/8	7 1/2
F (BONNET) "R"	-	4 3/8	3 5/8	3 5/8	4 3/8	-	-	-	-	-	-	-
G	3/8	13/16	7/8	7/8	7/8	7/8	7/8	7/8	7/8	1 3/4	1 3/4	1 3/4
H	5 7/16	8 1/2	11 7/16	11 7/16	11 7/16	13 3/4	13 3/4	13 3/4	13 3/4	18 3/4	18 3/4	16
I	12 1/4	17	18	18	18	20 15/16	21 3/4	21 3/4	21 3/4	28	29	34
J (SPRAG N.R.)	2 7/8	3 13/16	4 5/16	4 1/2	4 1/2	3 15/16	4 13/16	4 5/8	4 5/8	6 7/8	6 13/16	5
J (PIN TYPE N.R.)	-	4 3/4	5	5 3/16	5 1/4	5 1/16	5 7/8	5 9/16	5 9/16	-	-	-
K (SPRAG N.R.)	4 1/2	6 9/16	6 7/16	6 3/16	6 3/16	8 1/4	8 1/4	8 1/4	8 1/4	8 3/4	9 13/16	12 1/2
K (PIN TYPE N.R.)	-	5 5/8	5 3/4	5 1/2	5 1/2	7 3/16	7 3/16	7 1/8	7 1/8	-	-	-
L	2	1 1/4	1 1/2	1 1/2	1 1/2	1 3/4	1 3/4	1 3/4	1 3/4	1 1/4	1 1/4	2 3/8
Mnps	1/4	1/2	1/2	1/2	1/2	1/2	1/2	1/2	1/2	1/2	1/2	1/2
N	4	5 5/8	9 1/8	9 1/8	9 1/8	12 3/8	12 3/8	12 3/8	12 3/8	20	20	13
O	2 7/8	5 3/4	5 3/4	5 3/4	5 3/4	5 3/4	5 3/4	5 3/4	5 3/4	7 1/2	7 1/2	10
P	-	1 3/4	1 7/8	1 7/8	1 7/8	2 1/2	2 1/2	2 1/2	2 1/2	1 1/4	1 1/4	2 1/4
Q	-	3 1/8	3 3/4	3 3/4	3 3/4	4 1/2	4 1/2	4 1/2	4 1/2	3 3/16	3 3/16	11 7/16
Rnps	-	1/2	1/2	1/2	1/2	1/2	1/2	1/2	1/2	1/2	1/2	1/2
S	-	4 1/2	4 5/8	4 5/8	4 5/8	5 7/8	5 7/8	5 7/8	5 7/8	1 1/4	1 1/4	2 1/4
T	8	9 1/4	10 3/4	10 3/4	10 3/4	15 5/8	15 5/8	15 5/8	15 5/8	22	22	20
V	1 1/8	2	2	2	2 1/2	2 1/2	2 1/2	3	3	4	4	5
W	-	5 1/4	6 1/2	6 1/2	6 1/2	7 3/4	7 3/4	7 3/4	7 3/4	12	12	8 11/16
NET WT.	64	250	320	335	380	680	690	740	745	1500	1810	3000
DOMESTIC WT.LB.	75	275	345	360	406	718	728	778	783	1547	1857	3100
EXPORT (WOOD) LB.	92	340	420	435	480	820	830	880	885	1720	2030	3250
EXPORT CU. FT.	2.8	9.5	9.5	9.5	10.3	17.5	17.5	17.5	17.5	38.9	38.9	55.0

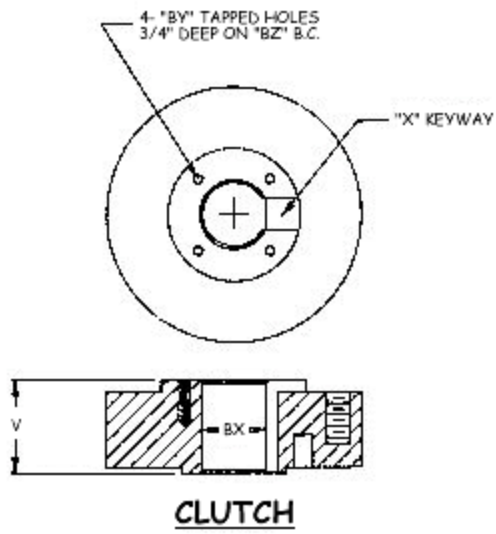
OIL CAP QTS.	1.5	6	7	7	7	13	13	13	13	24	24	80
---------------------	-----	---	---	---	---	----	----	----	----	----	----	----

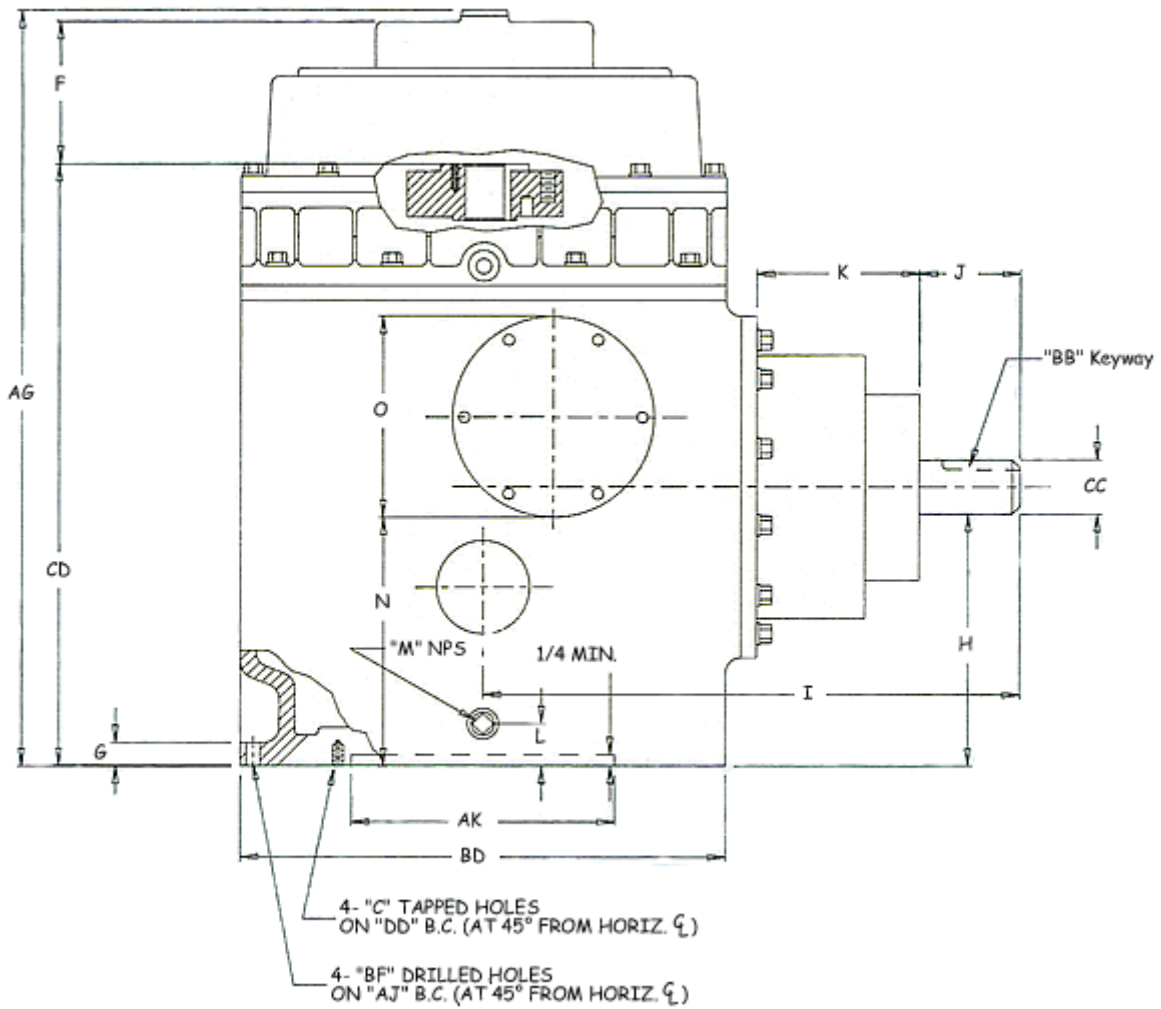
NOTE: Table is for standard Gear Drives only. For solid shaft, opposed, or EHT bearings, contact factory for dimension print.

STANDARD CLUTCH DIMENSIONS

TABLE 7b

"BX"	"X"	"BY"	"BZ"
3/4	3/16 x 3/32	10-32	1.375
7/8	1/4 x 1/8	10-32	1.375
1	1/4 x 1/8	10-32	1.375
1 1/16	1/4 x 1/8	10-32	1.375
1-3/16	1/4 x 1/8	1/4-20	1.750
1-1/4	1/4 x 1/8	1/4-20	1.750
1-7/16	3/8 x 3/16	1/4-20	2.125
1-1/2	3/8 x 3/16	1/4-20	2.125
1-11/16	3/8 x 3/16	1/4-20	2.500
1-3/4	3/8 x 3/16	1/4-20	2.500
1-15/16	1/2 x 1/4	1/4-20	2.500
2	1/2 x 1/4	1/4-20	2.500
2-3/16	1/2 x 1/4	3/8-16	3.250
2-1/4	1/2 x 1/4	3/8-16	3.250
2-7/16	5/8 x 5/16	3/8-16	3.250
2-1/2	5/8 x 5/16	3/8-16	3.750
2-11/16	5/8 x 5/16	3/8-16	3.750
2-3/4	5/8 x 5/16	3/8-16	3.750
2-15/16	3/4 x 3/8	3/8-16	3.750
3 3/16	3/4 x 3/8	3/8-16	4.250
3 7/16	7/8 x 7/16	3/8-16	4.750
3 1/2	7/8 x 7/16	3/8-16	4.750
3 11/16	7/8 x 7/16	3/8-16	4.750
3 3/4	7/8 x 7/16	3/8-16	4.750
4	1 x 1/2	3/8-16	4.750
4 1/4	1 x 1/2	3/8-16	5.000





DIMENSIONS

TABLE 8a

Contact factory for certified print when tolerances are required.

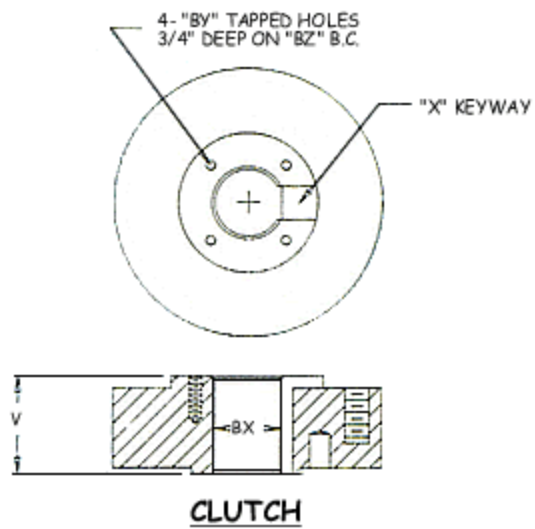
F, G, or M, designates "with fan cooling" - Model No. with suffix "R" has NO fan: Example - M200R

MODEL	F30	M40/ 60/ 80/ 100	G40/ 60/ 80	G100/ 125 M150	M200	G150/ 200A	G250/ 300	G350/ 400	G450 M500	F500/ 590/ 750	F1000	F1200/ 1500
AG (FAN)	14 3/8	22 1/4	26 11/16	26 11/16	29 15/16	34	34	36	37	45 7/16	45 7/16	46 1/8
AG (BONNET)	-	22 1/8	26 7/16	26 7/16	29 7/16	-	-	-	-	-	-	-
AJ	9 1/8	14 3/4	14 3/4	14 3/4	14 3/4	18 1/4	18 1/4	18 1/4	18 1/4	23	23	28 3/4
AK	8.252	13.501	13.501	13.501	13.501	13.501	13.501	13.501	13.501	13.501	13.501	22.005
BB	5/16 x 5/32	3/8 x 3/16	3/8 x 3/16	5/8 x 5/16	5/8 x 5/16	5/8 x 5/16	3/4 x 3/8	3/4 x 3/8	3/4 x 3/8	7/8 x 7/16	7/8 x 7/16	7/8 x 7/16

BD	10	16 1/2	16 1/2	16 1/2	16 1/2	20	20	20	20	24 1/2	24 1/2	30 1/2
BF	13/32	11/16	11/16	11/16	11/16	11/16	11/16	11/16	11/16	13/16	13/16	13/16
BXmax.	1	1 1/2	1 1/2	1 1/2	1 15/16	1 15/16	1 15/16	2 3/16	2 3/16	2-15/16	2-15/16	4 1/4
BXmin.	3/4	3/4	3/4	3/4	1 3/16	1 3/16	1 3/16	1 1/2	1 1/2	1 11/16	1 11/16	2 15/16
Ctap	-	-	-	-	-	5/8-11	5/8-11	5/8-11	5/8-11	5/8-11	5/8-11	3/4-10
CC	1.249	1.874	1.874	2.249	2.437	2.437	2.937	2.937	2.937	3.749	3.749	3.749
CD	11 3/4	17 5/8	22 9/16	22 5/8	24 7/8	29 3/16	29 3/16	31 9/16	32 3/4	40 13/16	40 13/16	37 3/4
DD	-	-	-	-	-	14 3/4	14 3/4	14 3/4	14 3/4	14 3/4	14 3/4	26
F (FAN)	2 5/8	3 15/16	3 1/2	3 1/2	4 1/2	4 1/8	4 1/16	3 3/8	3 3/8	3 7/8	3 7/8	7 1/2
F (BONNET) "R"	-	4 3/8	3 5/8	3 5/8	4 3/8	-	-	-	-	-	-	-
G	3/8	13/16	7/8	7/8	7/8	7/8	7/8	7/8	7/8	1 3/4	1 3/4	1 3/4
H	5 7/16	8 1/2	11 7/16	11 7/16	11 7/16	13 3/4	13 3/4	13 3/4	13 3/4	18 3/4	18 3/4	16
I	12 1/4	17	18	18	18	20 15/16	21 3/4	21 3/4	21 3/4	28	29	34
J (SPRAG N.R.)	2 7/8	3 13/16	4 5/16	4 1/2	4 1/2	3 15/16	4 13/16	4 5/8	4 5/8	6 7/8	6 13/16	5
J (PIN TYPE N.R.)	-	4 3/4	5	5 3/16	5 1/4	5 1/16	5 7/8	5 9/16	5 9/16	-	-	-
K (SPRAG N.R.)	4 1/2	6 9/16	6 7/16	6 3/16	6 3/16	8 1/4	8 1/4	8 1/4	8 1/4	8 3/4	9 13/16	12 1/2
K (PIN TYPE N.R.)	-	5 5/8	5 3/4	5 1/2	5 1/2	7 3/16	7 3/16	7 1/8	7 1/8	-	-	-
L	2	1 1/4	1 1/2	1 1/2	1 1/2	1 3/4	1 3/4	1 3/4	1 3/4	1 1/4	1 1/4	2 3/8
Mnps	1/4	1/2	1/2	1/2	1/2	1/2	1/2	1/2	1/2	1/2	1/2	1/2
N	4	5 5/8	9 1/8	9 1/8	9 1/8	12 3/8	12 3/8	12 3/8	12 3/8	20	20	13
O	2 7/8	5 3/4	5 3/4	5 3/4	5 3/4	5 3/4	5 3/4	5 3/4	5 3/4	7 1/2	7 1/2	10
P	-	1 3/4	1 7/8	1 7/8	1 7/8	2 1/2	2 1/2	2 1/2	2 1/2	1 1/4	1 1/4	2 1/4
Q	-	3 1/8	3 3/4	3 3/4	3 3/4	4 1/2	4 1/2	4 1/2	4 1/2	3 3/16	3 3/16	11 7/16
Rnps	-	1/2	1/2	1/2	1/2	1/2	1/2	1/2	1/2	1/2	1/2	1/2
S	-	4 1/2	4 5/8	4 5/8	4 5/8	5 7/8	5 7/8	5 7/8	5 7/8	1 1/4	1 1/4	2 1/4
T	8	9 1/4	10 3/4	10 3/4	10 3/4	15 5/8	15 5/8	15 5/8	15 5/8	22	22	20
V	1 1/8	2	2	2	2 1/2	2 1/2	2 1/2	3	3	4	4	5
W	-	5 1/4	6 1/2	6 1/2	6 1/2	7 3/4	7 3/4	7 3/4	7 3/4	12	12	8 11/16
NET WT.	64	250	320	335	380	680	690	740	745	1500	1810	3000
DOMESTIC WT.LB.	75	275	345	360	406	718	728	778	783	1547	1857	3100
EXPORT (WOOD) LB.	92	340	420	435	480	820	830	880	885	1720	2030	3250
EXPORT CU. FT.	2.8	9.5	9.5	9.5	10.3	17.5	17.5	17.5	17.5	38.9	38.9	55.0
OIL CAP QTS.	1.5	6	7	7	7	13	13	13	13	24	24	80

[<< back to top](#)

STANDARD CLUTCH DIMENSIONS			
TABLE 8b			
"BX"	"X"	"BY"	"BZ"
1 3/16	1/4 x 1/8	1/4-20	1.750
1 1/4	1/4 x 1/8	1/4-20	1.750
17/16	3/8 x 3/16	1/4-20	2.125
1 1/2	3/8 x 3/16	1/4-20	2.125
1 11/16	3/8 x 3/16	1/4-20	2.500
1 3/4	3/8 x 3/16	1/4-20	2.500
1 15/16	1/2 x 1/4	1/4-20	2.500
2	1/2 x 1/4	1/4-20	2.500
2 3/16	1/2 x 1/4	3/8-16	3.250
2 1/4	1/2 x 1/4	3/8-16	3.250
2 3/8	5/8 x 5/16	3/8-16	3.250
2 7/16	5/8 x 5/16	3/8-16	3.250
2 1/2	5/8 x 5/16	3/8-16	3.250
2 5/8	5/8 x 5/16	3/8-16	3.250
2 11/16	5/8 x 5/16	3/8-16	3.750
2 3/4	5/8 x 5/16	3/8-16	3.750
2 15/16	3/5 x 3/8	3/8-16	3.750
3	3/5 x 3/8	3/8-16	3.750
3 3/16	3/4 x 3/8	3/8-16	4.250
3 1/4	3/4 x 3/8	3/8-16	4.250
3 7/16	7/8 x 7/16	3/8-16	4.750
3 1/2	7/8 x 7/16	3/8-16	4.750
3 5/8	7/8 x 7/16	3/8-16	4.750
3 11/16	3/5 x 3/8	3/8-16	4.750
3 3/4	7/8 x 7/16	3/8-16	4.750
4	1 x 1/2	3/8-16	4.750
4 1/4	1 x 1/2	3/8-16	5.000



How To Order...

To order or make any enquiries regarding the gear drives listed on www.randolph.net.au please contact the production factory directly.

Please limit enquiries to weekdays, within normal business hours (7:30am - 4:00pm).

Contact Us

[contact details](#) | [location map](#)

As a company that prides itself on excellence and high quality, Randolph Manufacturing Company Australia, is more than willing to assist you in gaining information about, or making enquiries regarding:

- The Company
- Randolph right-angle gear drives
- Product details and specifications
- Ordering
- Purchases and warranties
- Installation/maintainance
- Anything at all regarding Randolph Right-Angle Gear Drives

Please feel free to contact us any weekday within normal business hours (7:30am - 4:00pm).

Details	
Sales Manager:	Chris Roden
Mailing Address:	53 Boolcarrol Road Wee Waa NSW 2388
Phone (Factory):	(02) 6795 3971 [within Australia] +612 67953971 [International]
Phone (After Hours):	(02) 6795 1125 [within Australia] +612 6795 1125 [International]
Moblie Phone:	0427 951 226 [within Australia] +614 27 951 226 [International]
Fax:	(02) 6795 1227 [within Australia] +612 6795 1227 [International]
Email:	Pro8819@bigpond.net.au